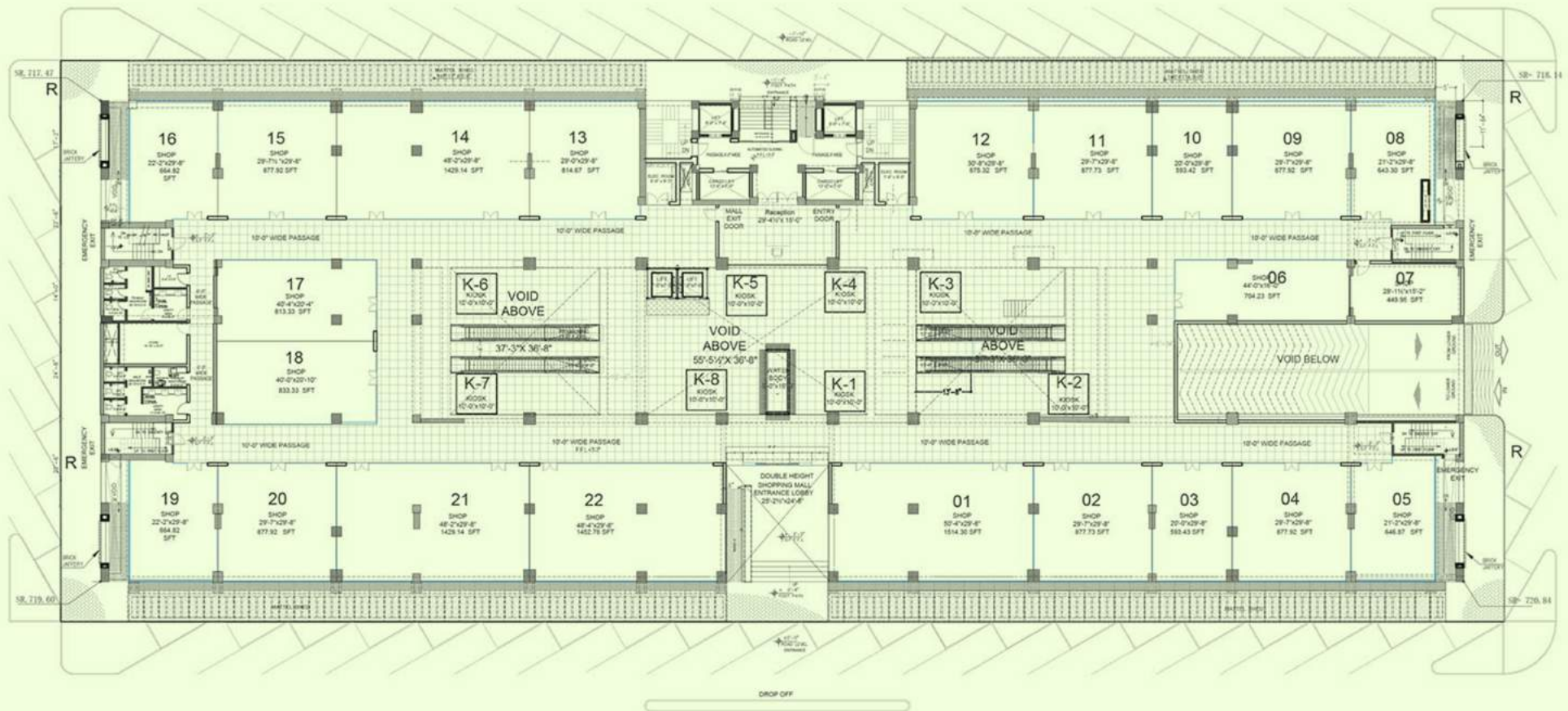


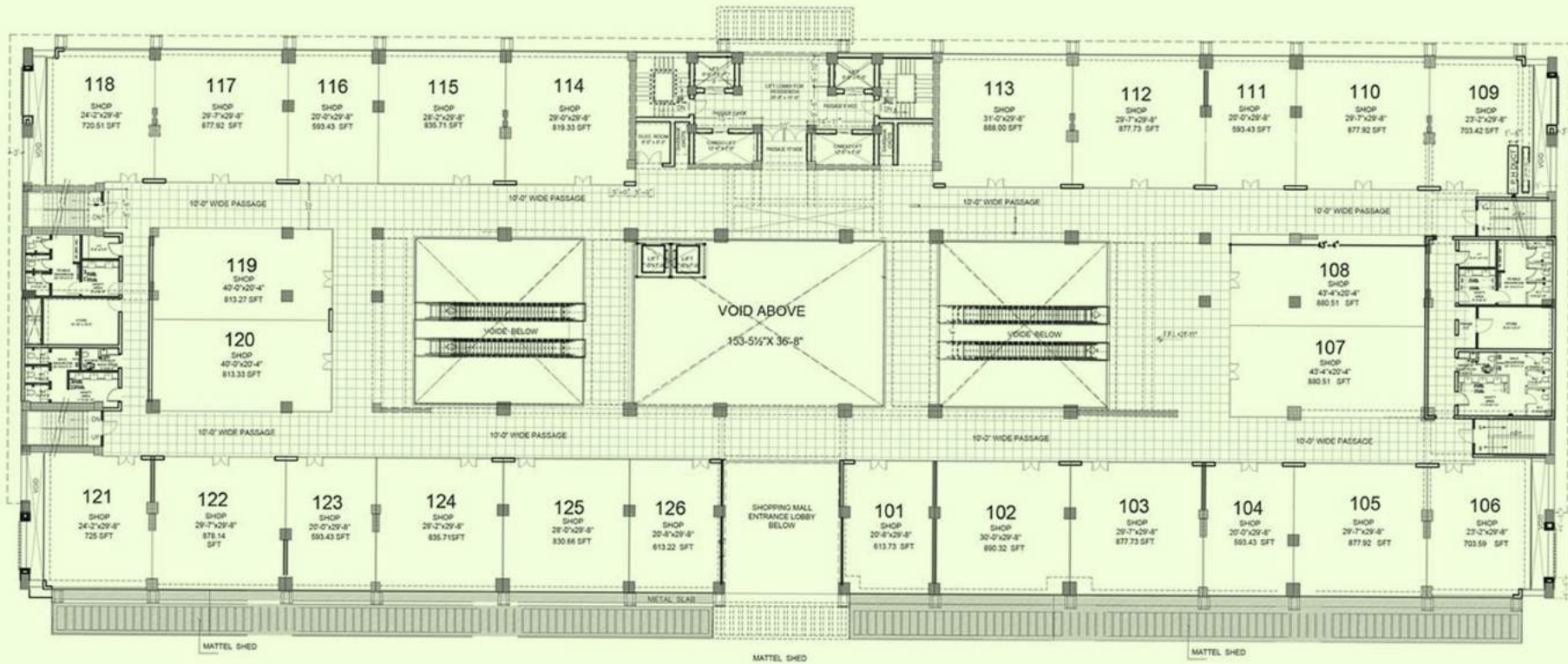


FLOOR PLANS



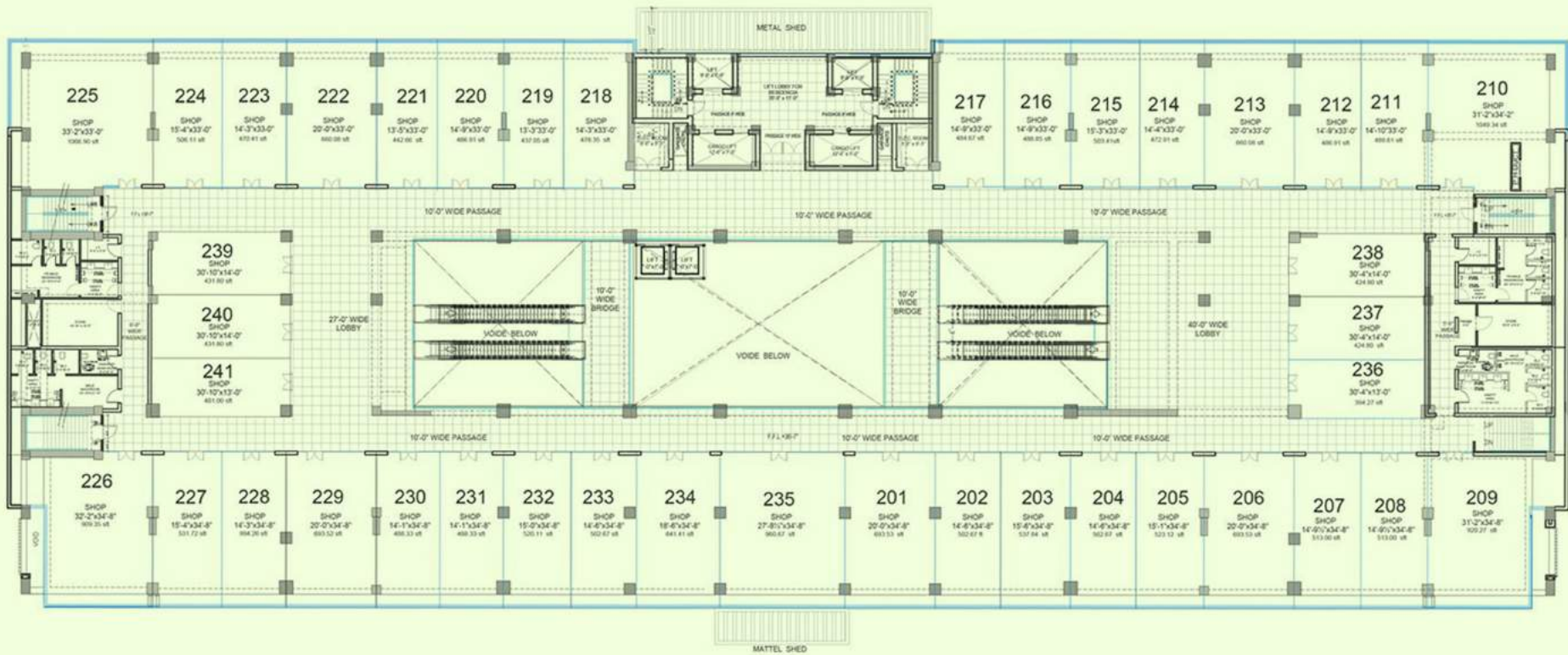
GROUND FLOOR PLAN

- Shops (01 - 22)
Total 22 Units



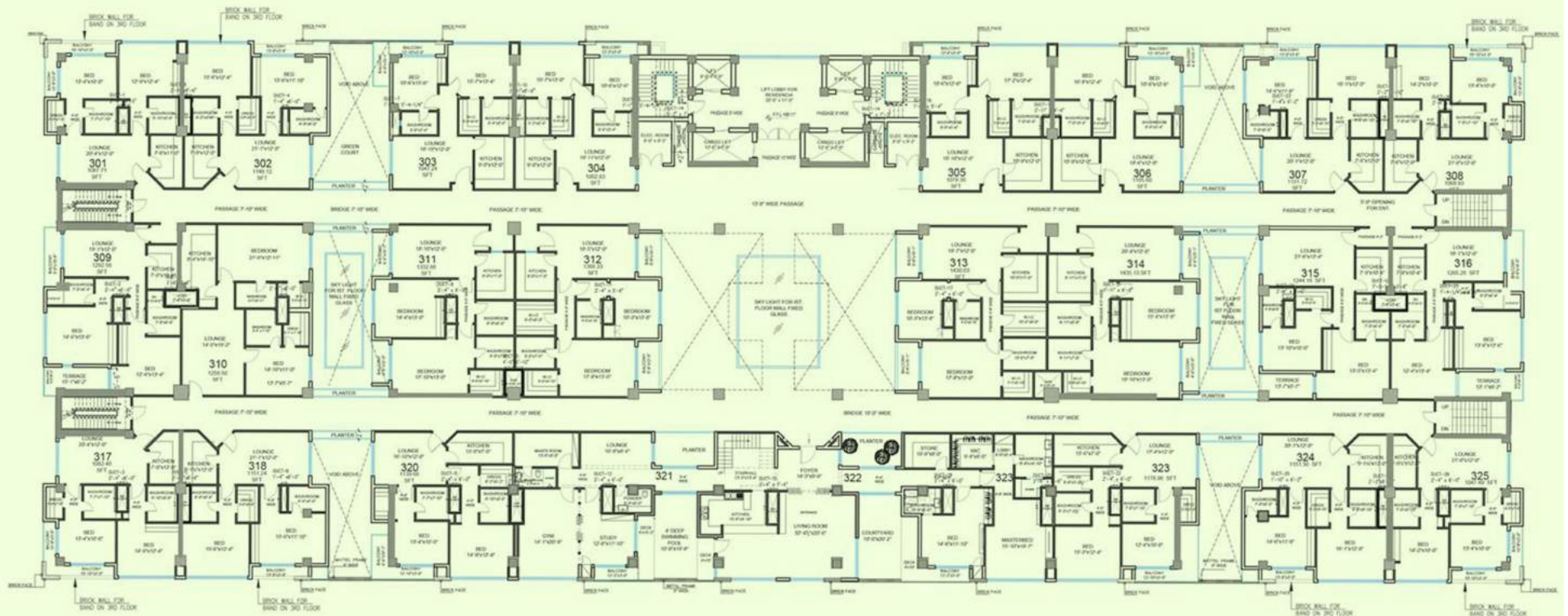
MEZZANINE FLOOR PLAN

- Shops (101 - 126)
- Total 26 Units



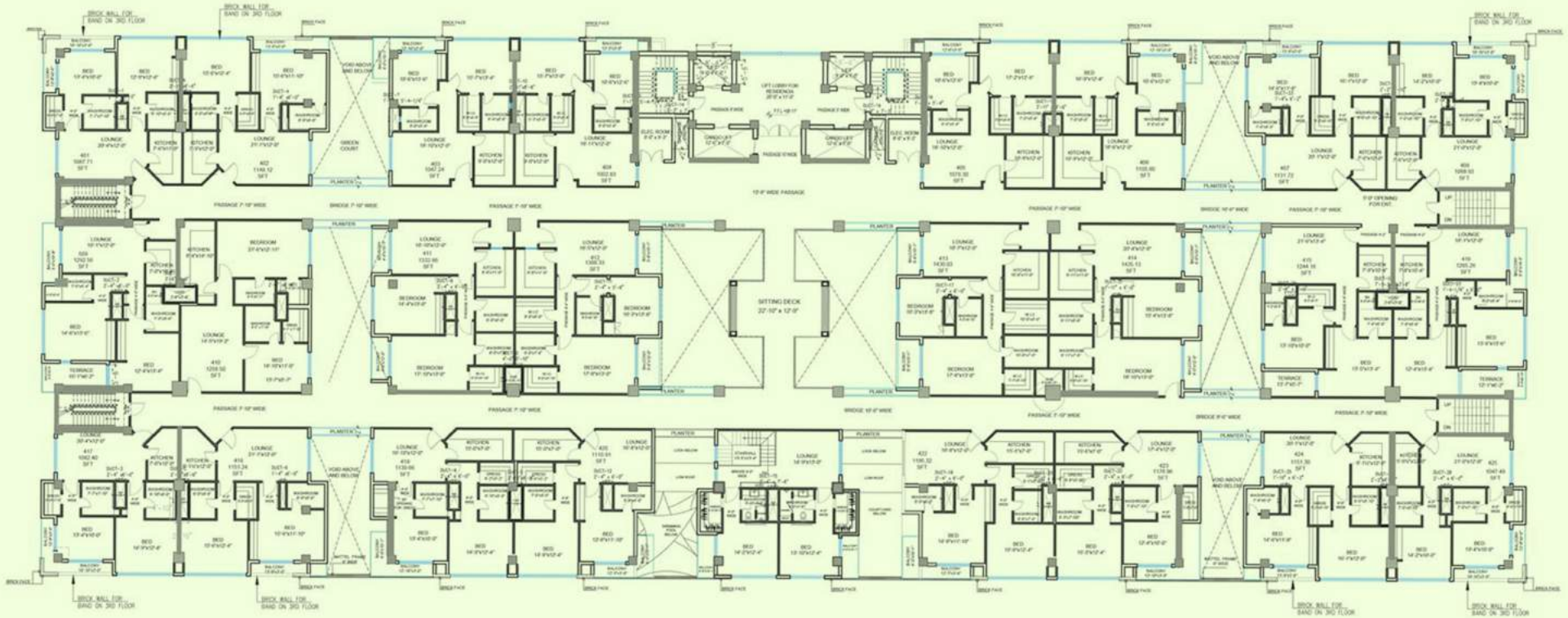
1ST FLOOR PLAN

- Shops (201 - 241)
Total 41 Units



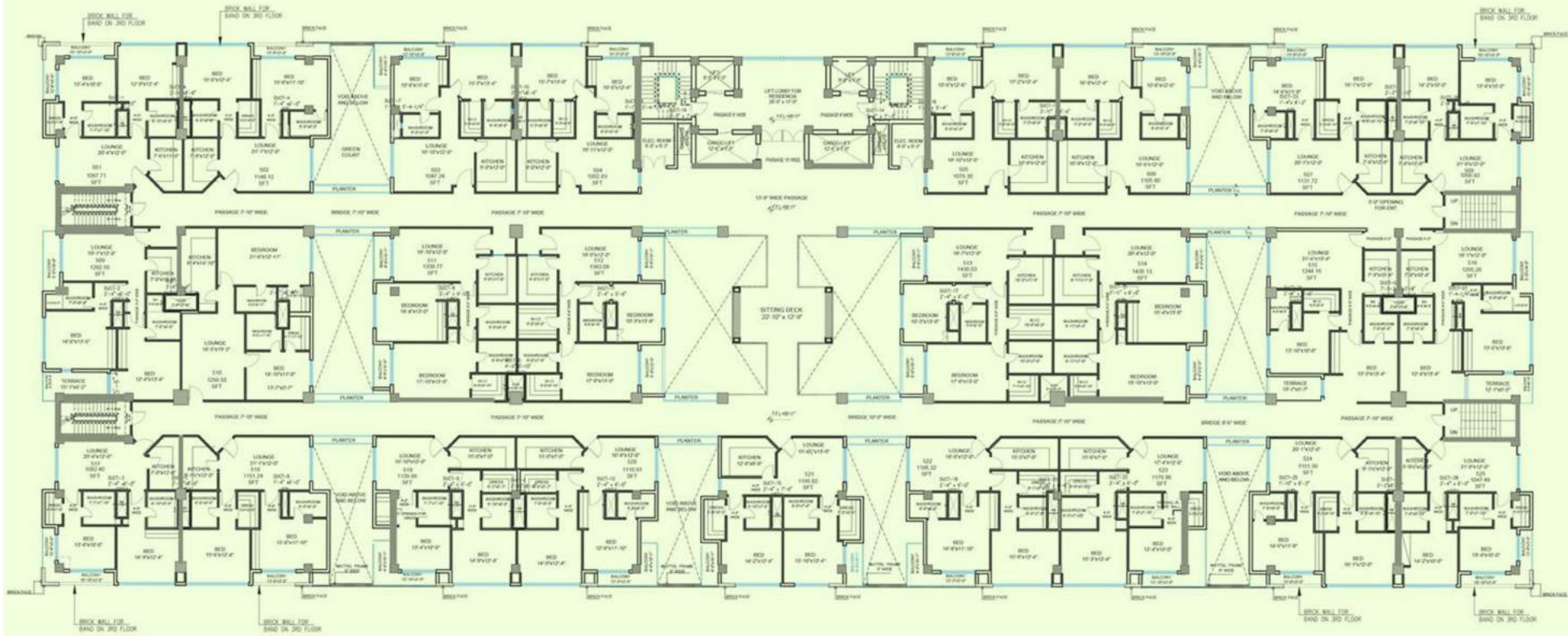
3RD FLOOR PLAN

- Beds (301 - 325)
- Total 25 Units



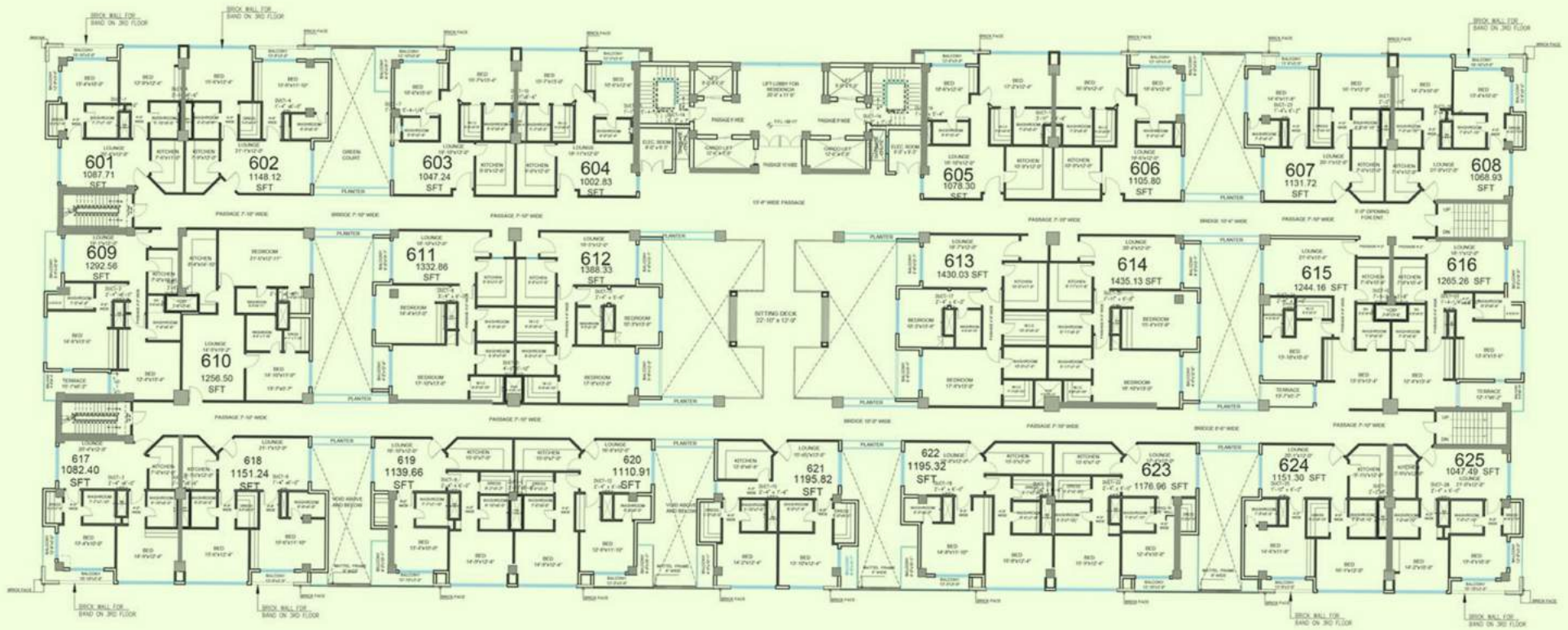
4TH FLOOR PLAN

- Beds (401 - 425)
- Total 25 Units



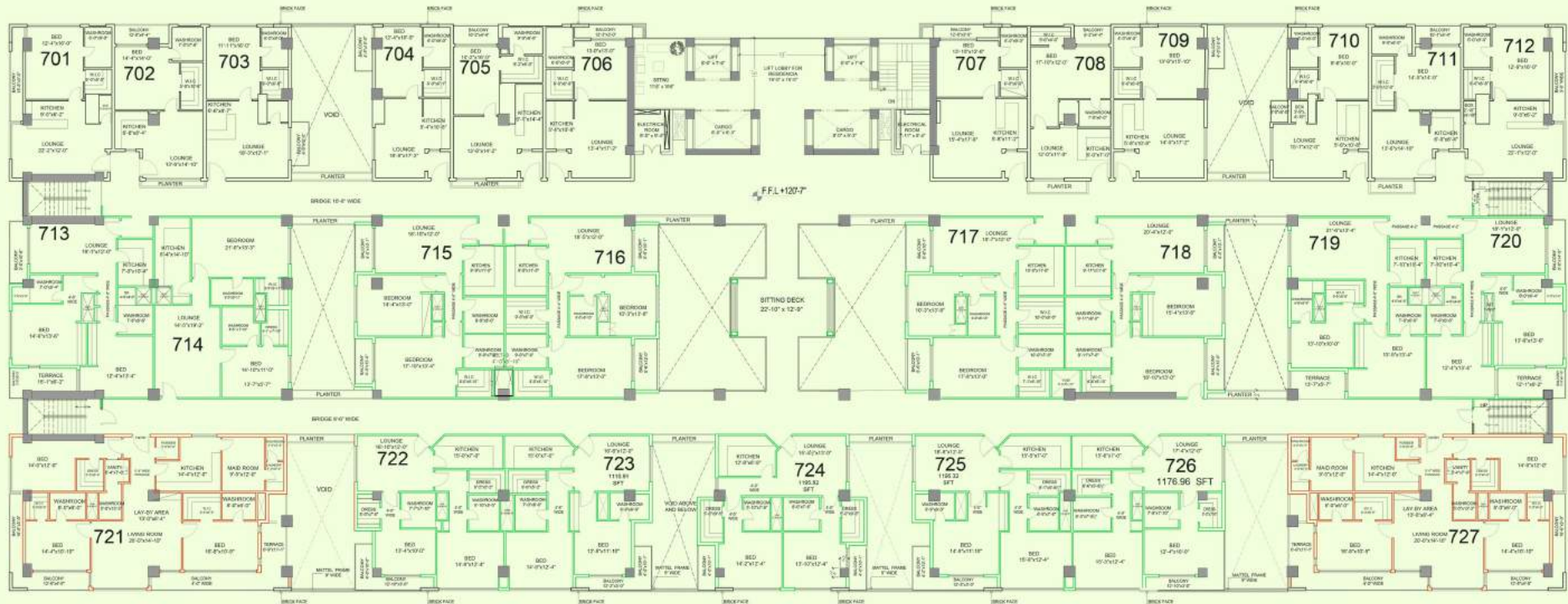
5TH FLOOR PLAN

- Beds (501 - 525)
- Total 25 Units



6TH FLOOR PLAN

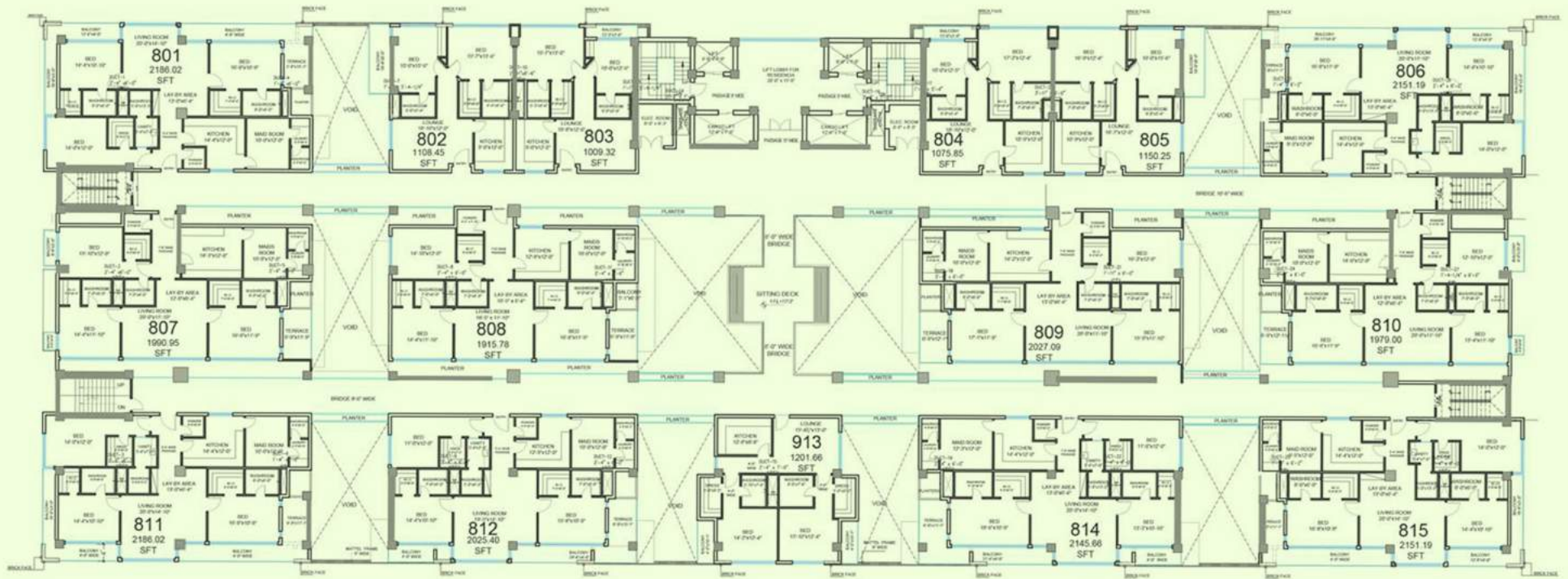
- Beds (601 - 625)
- Total 25 Units



- 1 BED APARTMENTS
- 2 BED APARTMENTS
- 3 BED APARTMENTS

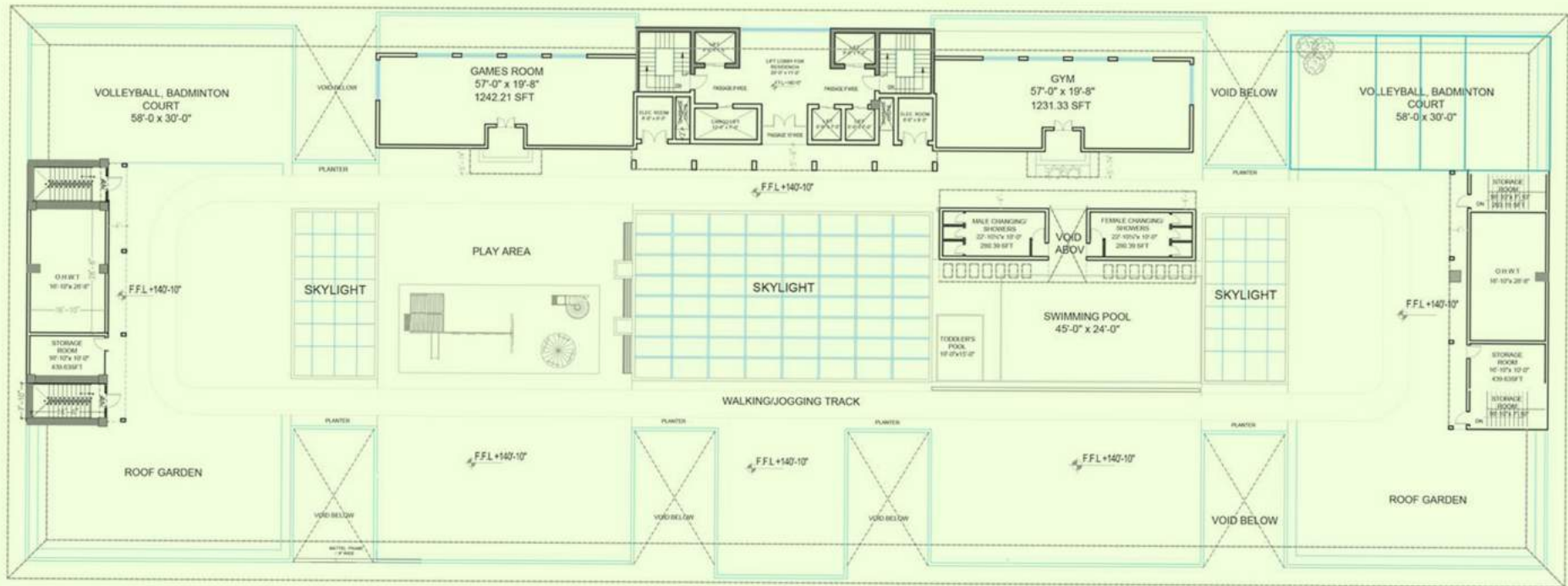
7TH FLOOR PLAN

■ Beds (701 - 727)
 Total 27 Units



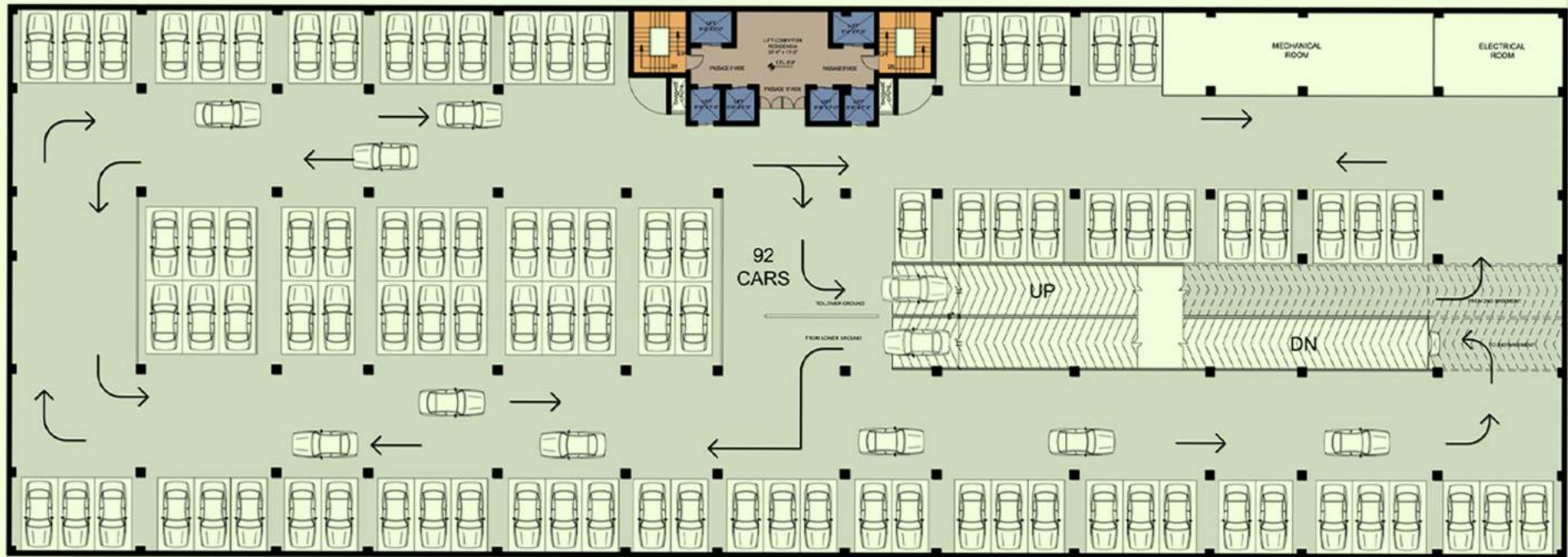
8TH FLOOR PLAN

- Beds (801 - 815)
Total 15 Units



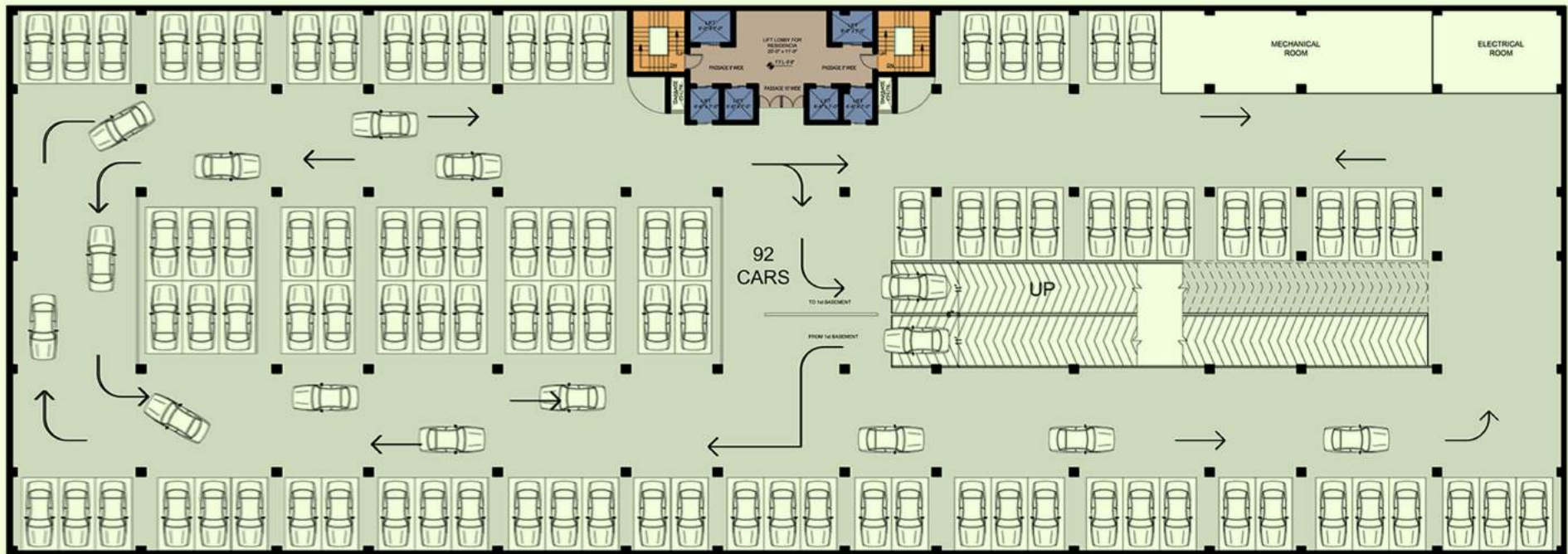
9TH FLOOR PLAN

- Volleyball, Badminton court, Roof Garden, Play Area, Jogging Track, Skylight, Swimming Pool



1ST BASEMENT FLOOR PLAN

- Car Parking Area, Electrical & Mechanical Area



2ND BASEMENT FLOOR PLAN

- Car Parking Area, Electrical & Mechanical Area



SKYPARK
ONE

suhail&fawad_{architects}

ARCHITECTURE . PLANNING . INTERIOR DESIGN

one
EXPRESSWAY

CORPORATE OFFICES . RETAIL . HOSPITALITY



TAHEEM CONSTRUCTION COMPANY

South Ave, Gulberg Greens Gulberg Greens Block B
Gulberg Greens, Islamabad, Islamabad Capital Territory